

FOR LEASE

3,596 SF | Corona, CA | High-Image Free-Standing Office Building

Presented by Strata Realty, Inc. | www.stratarealty.com | T (951) 280-1733 | F (951) 280-1739



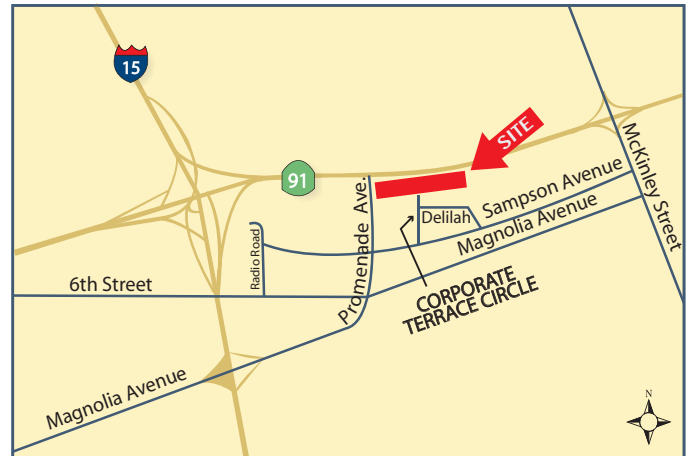
3,596 SF FREE-STANDING OFFICE BUILDING

Location

361 Corporate Terrace Circle
Corona, CA 92879

Features

- Part of a 10-acre, master-planned development
- Six (6) private offices
- One (1) conference room
- Break room
- Server Room
- Copy Room
- Private Restrooms
- Highly Upgraded Construction
- Extensive tenant improvement build-out
- Approximately 250,000 cars pass by the project daily
- Convenient access to I-15 and 91 freeways
- Close to restaurants, health club, and retail amenities
- Direct frontage on the 91 freeway



Contact:

Timothy Hawke, SIOR

(951) 280-1733 | thawke@stratarealty.com

Adam Silverman

(951) 280-1733 | asilverman@stratarealty.com

Jason Palda

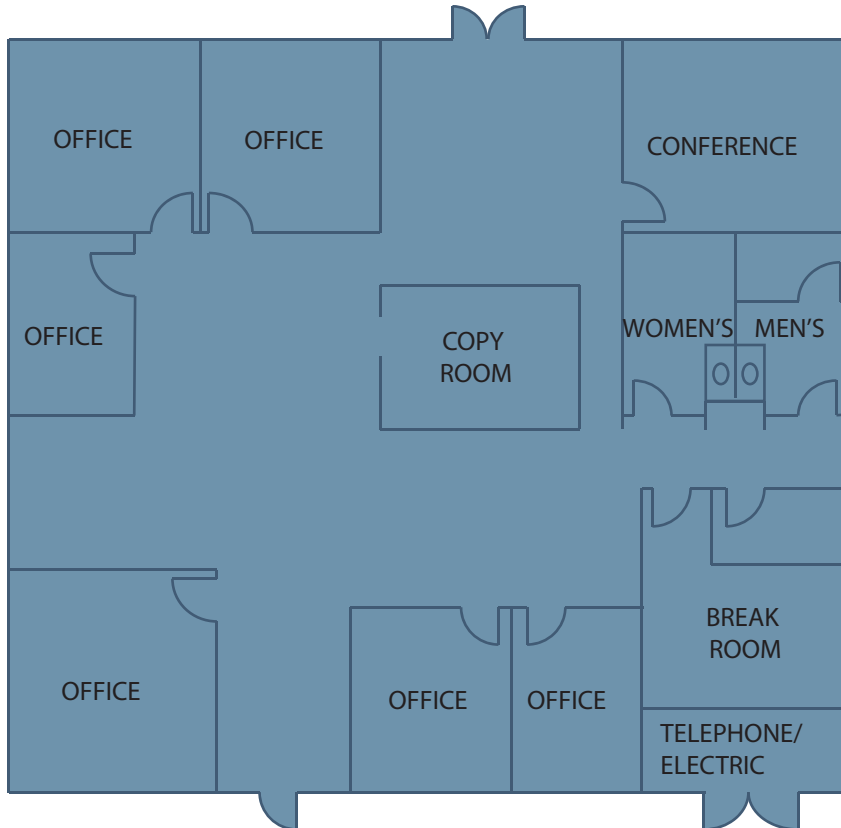
(951) 280-1733 | jpalda@stratarealty.com

FOR LEASE

3,596 SF | Corona, CA | High-Image Free-Standing Office Building

Contact: Timothy Hawke, Adam Silverman, or Jason Palda | T (951) 280-1733

FLOOR PLAN



DRE Information

Timothy Hawke's license number is 01403432
Adam Silverman's license number is 01397929
Jason Palda's license number is 01820370