

**FOR LEASE**

590 - 3,325 SF | Corona, CA | Office Suites in High-Image Two-Story Corporate Office Bldg

Presented by Strata Realty, Inc. | [www.stratarealty.com](http://www.stratarealty.com) | T (951) 280-1733 | F (951) 280-1739



**590 to 3,325 SF OFFICE SUITES IN TWO-STORY HIGH-IMAGE CORPORATE OFFICE BUILDING**

**Location**

495 E. Rincon Street  
Corona, CA 92879

**Features**

- Suites available from 590 SF to 3,325 SF
- Flexible lease terms
- Hands-on landlord
- Beautiful fenced courtyard with fountain and abundant landscaping
- Central Corona location
- Within walking distance to restaurants, retail amenities, and a Metrolink station
- Excellent access to the I-15 and 91 freeways



Contact:

**Timothy Hawke, SIOR**

(951) 280-1733 | [thawke@stratarealty.com](mailto:thawke@stratarealty.com)

**Adam Silverman**

(951) 280-1733 | [asilverman@stratarealty.com](mailto:asilverman@stratarealty.com)

**Jason Palda**

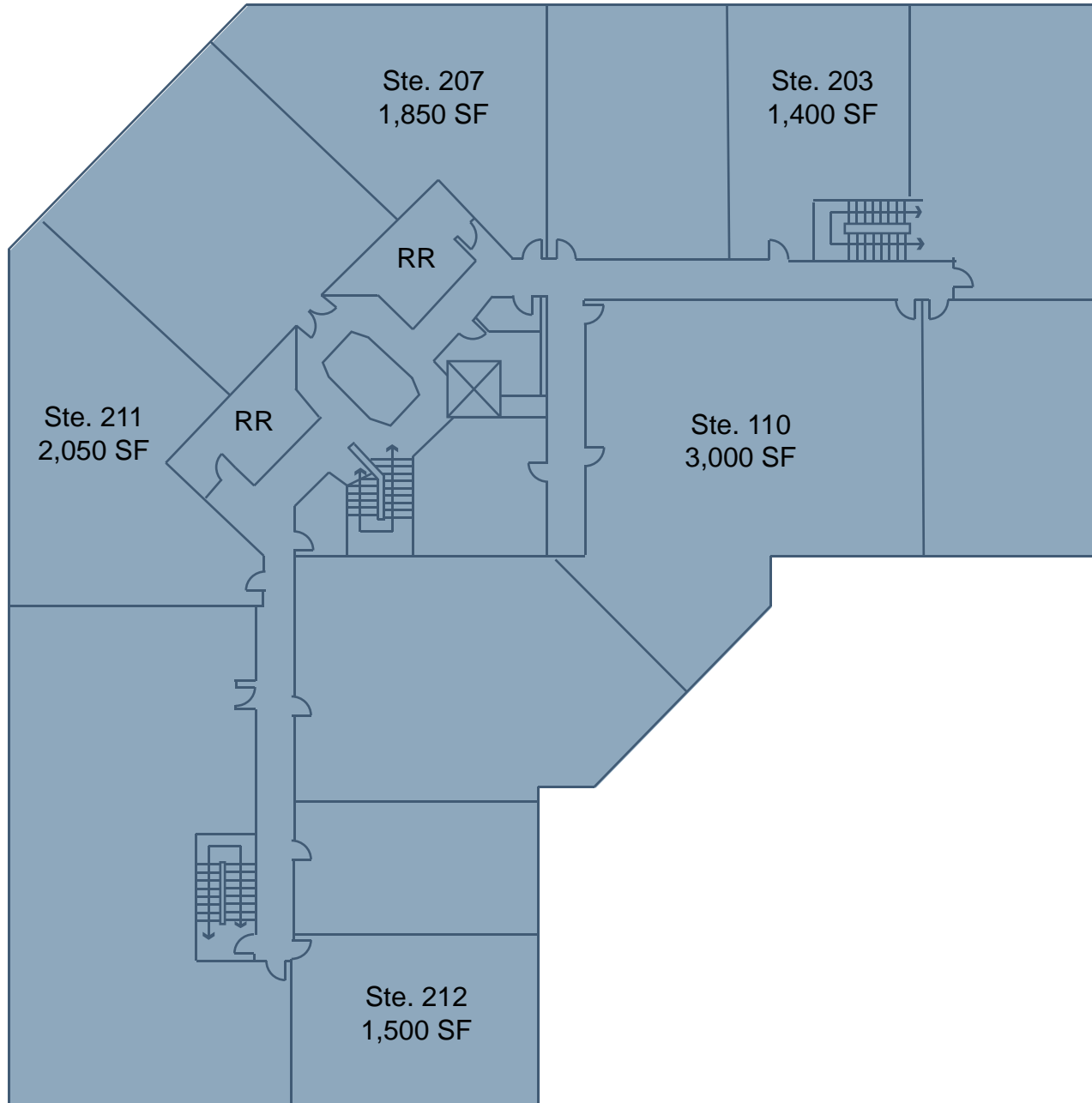
(951) 280-1733 | [jpalda@stratarealty.com](mailto:jpalda@stratarealty.com)

**FOR LEASE**

590 - 3,325 SF | Corona, CA | Office Suites in High-Image Two-Story Corporate Office Bldg

Contact: Timothy Hawke, Adam Silverman, or Jason Palda | T (951) 280-1733

FLOOR PLAN



**DRE Information**

Timothy Hawke's license number is 01403432  
Adam Silverman's license number is 01397929  
Jason Palda's license number is 01820370