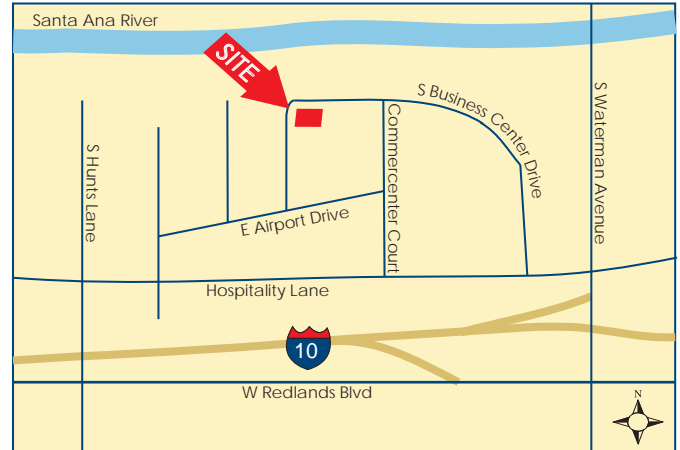


**FOR
LEASE****14,788 SF | San Bernardino, CA | Multi-Tenant Two-Story Office Building**Presented by Strata Realty, Inc. | www.stratarealty.com | T (951) 280-1733 | F (951) 280-1739**14,788 SF SUITE IN MULTI-TENANT
TWO-STORY OFFICE BUILDING****Location**202 E. Airport Blvd, Suite 200
San Bernardino, CA 92408**Features**

- Renovations underway
- 18 miles from the Ontario Airport
- Major intermodal rail yard capable of handling 500,000 containers per year
- Lushly landscaped courtyard
- Fire sprinklered
- Elevator served
- Excellent freeway access to the I-10, I-215, I-15 and I-210 freeways
- Nearby amenities include restaurants and hotels

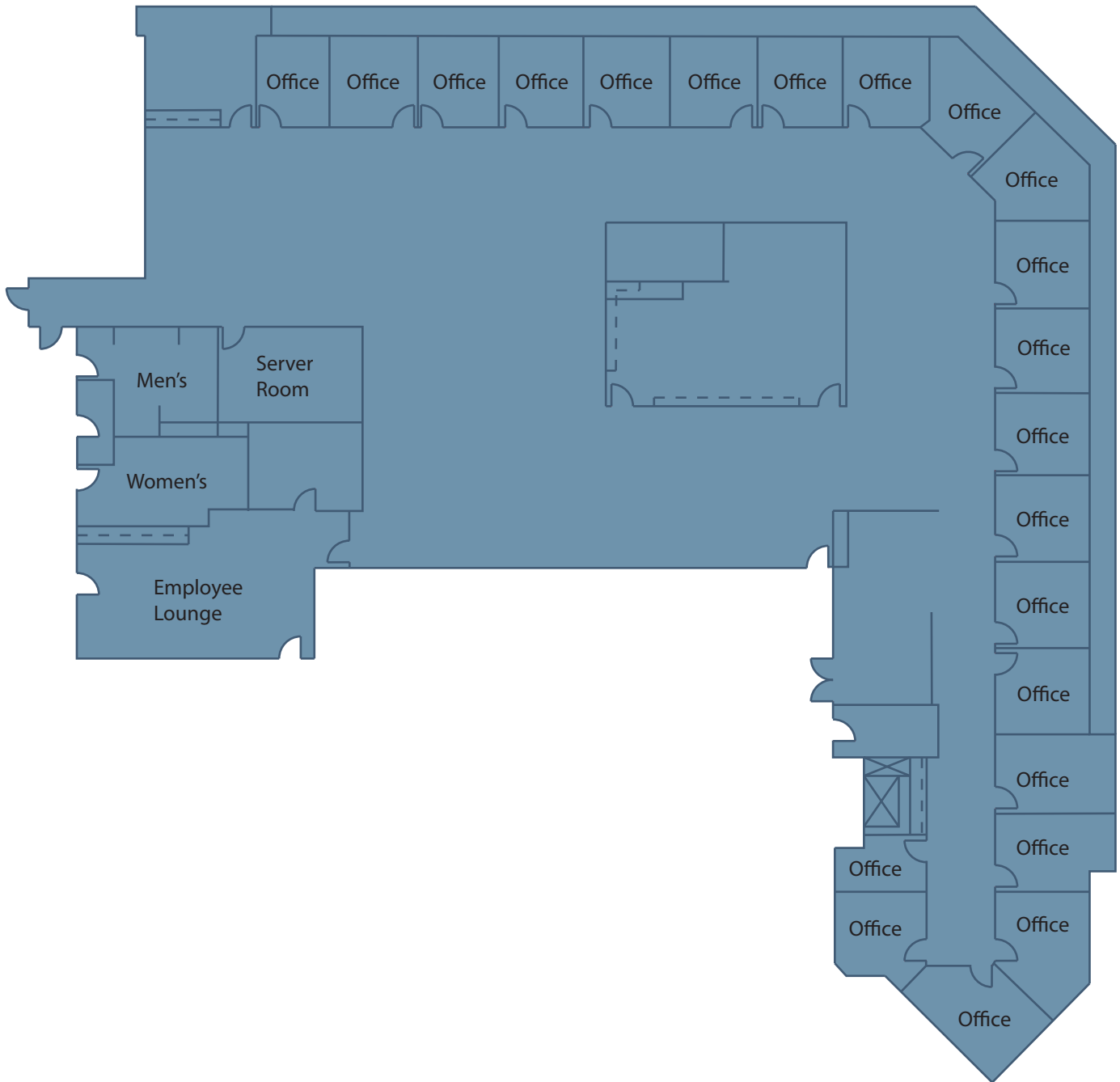
**Contact:****Timothy Hawke, SIOR**(951) 280-1733 | thawke@stratarealty.com**Adam Silverman**(951) 280-1733 | asilverman@stratarealty.com**Jason Palda**(951) 280-1733 | jpalda@stratarealty.com**DRE Information**Timothy Hawke's license number is 01403432
Adam Silverman's license number is 01397929
Jason Palda's license number is 01820370

**FOR
LEASE**

14,788 SF | San Bernardino, CA | Multi-Tenant Two-Story Office Building

Contact: Timothy Hawke, Adam Silverman or Jason Palda | T (951) 280-1733

FLOOR PLAN



DRE Information

Timothy Hawke's license number is 01403432
Adam Silverman's license number is 01397929
Jason Palda's license number is 01820370