

FOR LEASE

21,000 SF | Corona, CA | Multi-Tenant Industrial Unit

Presented by Strata Realty | www.stratarealty.com | T (951)280-1733 | F (951) 280-1739

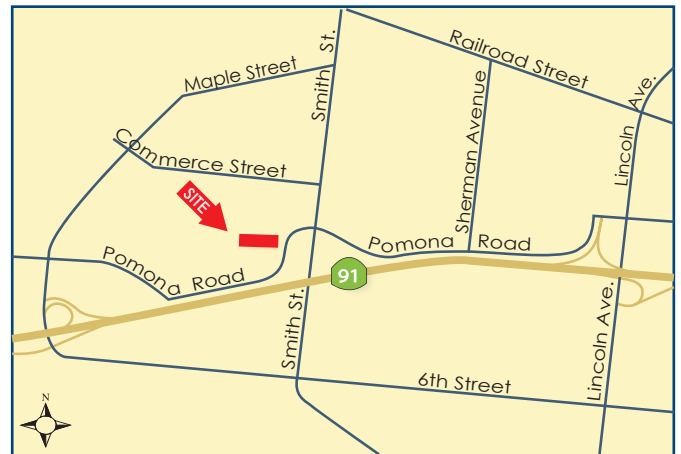


Location

1521 Pomona Road #C
Corona, CA 92880

Features

- 21,000 SF unit; part of a larger 49,494 SF building
- Newly completed 1,468 SF office
- Three (3) private offices
- Two (2) office restrooms
- Two (2) warehouse restrooms
- Coffee bar
- Newly painted warehouse
- Newly painted exterior
- Security bars on skylights
- New window shades
- One (1) ground level door
- Two (2) dock high doors
- 22' minimum clearance height
- Possible small fenced yard area
- 600 amps, 277/480 volts
- Secured parking
- Easy access to the 91 freeway



Contact:

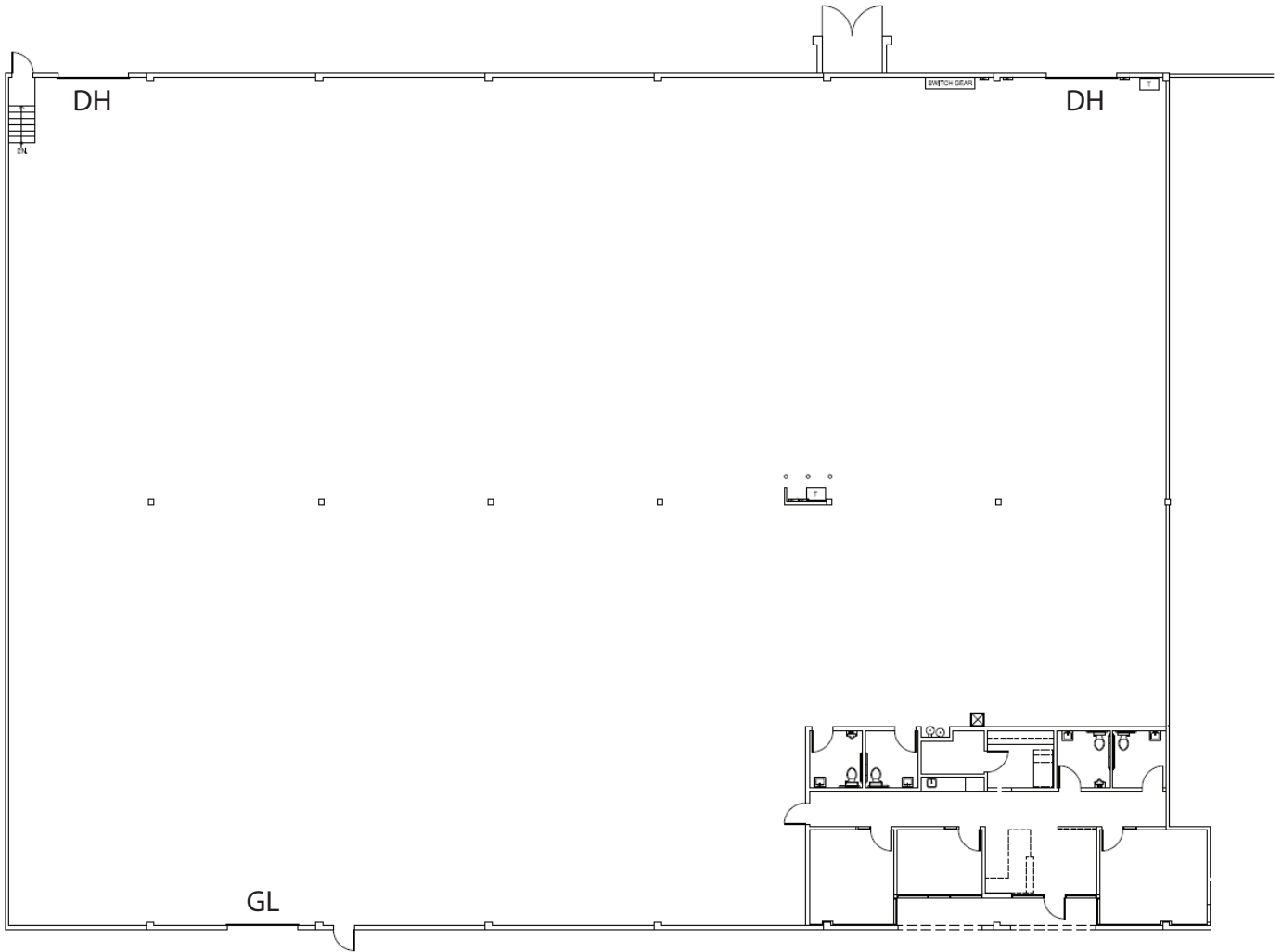
Timothy Hawke, SIOR
(951) 280-1733 | thawke@stratarealty.com

FOR LEASE

21,000 SF | Corona, CA | Mutli-Tenant Industrial Unit

Contact: Timothy Hawke | T (951) 280-1733

FLOOR PLAN

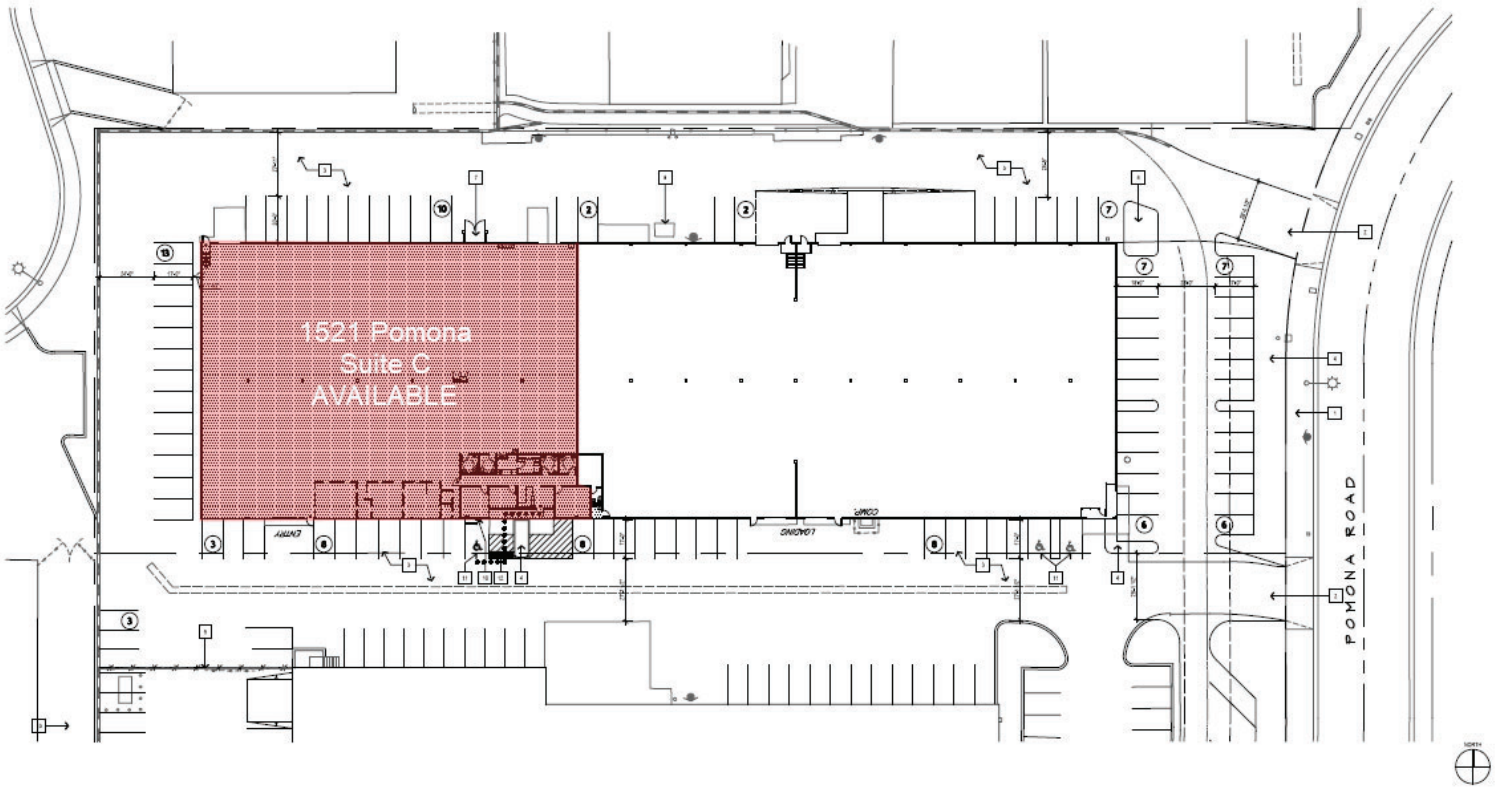


FOR LEASE

21,000 SF | Corona, CA | Mutli-Tenant Industrial Unit

Contact: Timothy Hawke | T (951) 280-1733

SITE PLAN

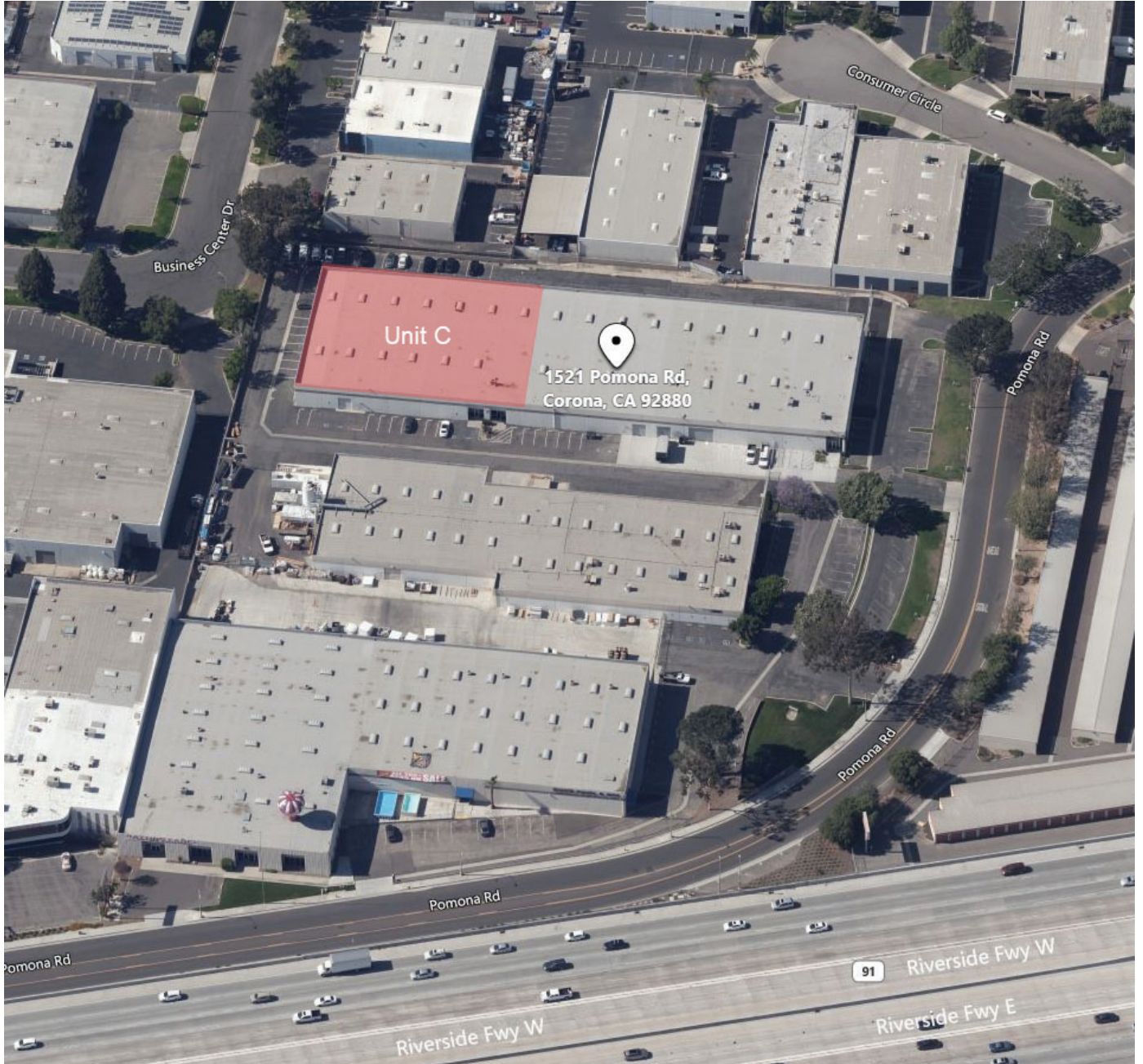


FOR LEASE

21,000 SF | Corona, CA | Mutli-Tenant Industrial Unit

Contact: Timothy Hawke | T (951) 280-1733

AERIAL



Strata Realty, Inc. | 2433 Pomona Road, Corona, CA 92878 | www.stratarealty.com

The information contained herein was obtained from third parties, and it has not been independently verified by the real estate brokers. Buyers/tenants should have the experts of their choice inspect the property and verify all information. Real estate brokers are not qualified to act as or select experts to legal, tax, environment, building construction, soil-drainage or other such matters. Copyright © 2009 Strata Realty. All rights reserved

DRE Information

Timothy Hawke's license number is 00880273