

FOR LEASE**4,104 SF | Corona, CA | Office Suite in a High-Image, Two-Story Office Building**Presented by Strata Realty, Inc. | www.stratarealty.com | T (951) 280-1733 | F (951) 280-1739**4,104 SF OFFICE SUITE IN HIGH-IMAGE BUILDING**
MEDICAL USES ALLOWED**Location**1181 California Avenue, Suite 102
Corona, CA 92881**Features**

- Concrete tilt-up office building
- Five (5) private offices
- Server room
- Copy center
- Eleven (11) permanent work stations
- Abundant window lines throughout
- Beautiful entrance/lobby with built-in reception desk
- Freeway fronting signage available
- High-efficiency building - low load factor allows for more usable area, and solar panels installed on property to lower energy costs
- Desirable south Corona location
- Within walking distance to many retail amenities nearby
- Great access to 91 and I-15 freeways

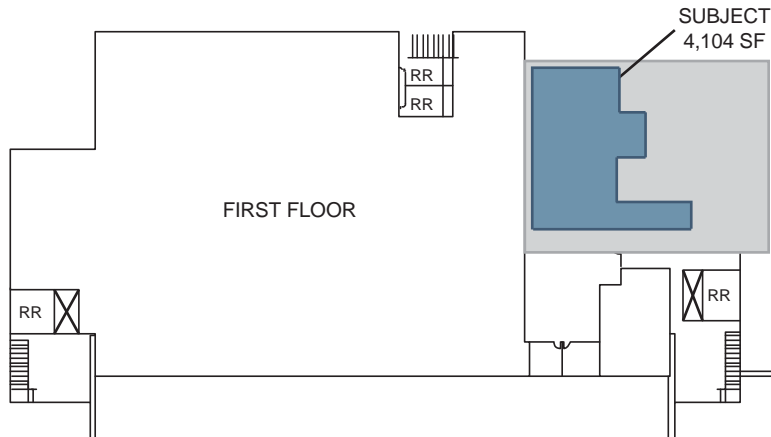
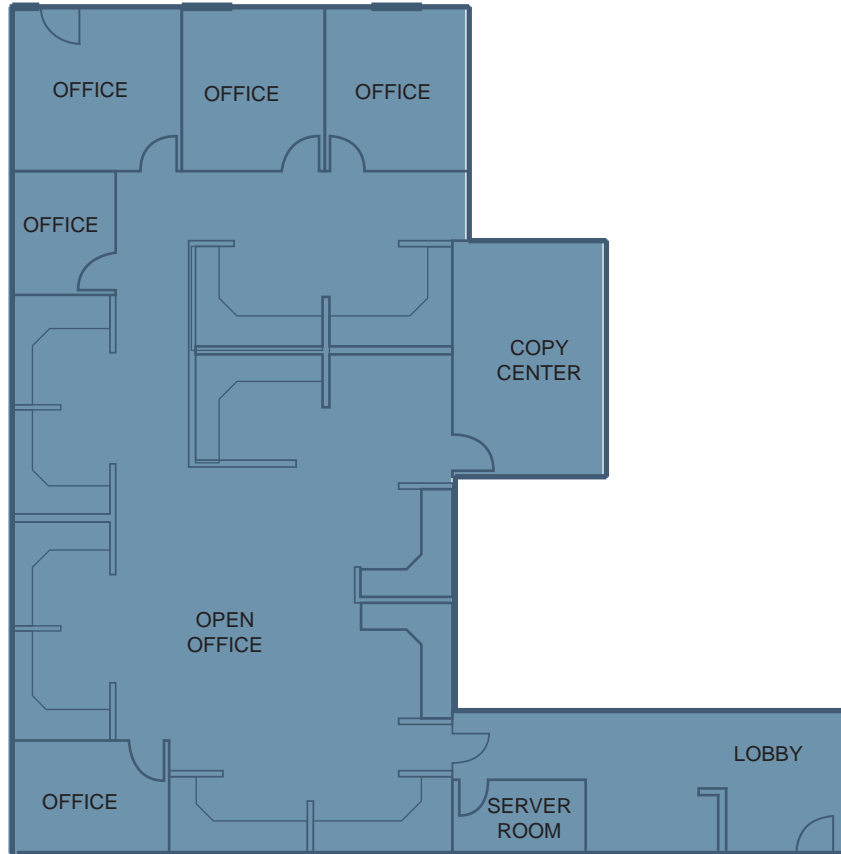
**Contact:****Timothy Hawke, SIOR**(951) 280-1733 | thawke@stratarealty.com**Adam Silverman**(951) 280-1733 | asilverman@stratarealty.com**Jason Palda**(951) 280-1733 | jpalda@stratarealty.com**DRE Information**Timothy Hawke's license number is 01403432
Adam Silverman's license number is 01397929
Jason Palda's license number is 01820370

FOR LEASE

4,104 SF | Corona, CA | Office Suite in a High-Image, Two-Story Office Building

Contact: Tim Hawke, Adam Silverman, or Jason Palda | T (951) 280-1733

FLOOR PLAN



DRE Information